



 POLYMER

QUICK EASY RELIABLE


PIPINGSYSTEM

Fire behaviour

All components with self-extinguishing features, without flame propagation pipes, fittings and flexible hoses meeting

EN 13501-1:2007+A1:2009
EN ISO11925-2:2010
EN ISO13823:2010

specifications.

High system flexibility

Our products were designed to create complete distribution systems for compressed air and pressurized fluids. They enable easy future system expansions and can also be connected to already existing systems owing to their high versatility.

Compliance with CE

All products meeting 97/23/EC directive on pressure equipment, which has the force of law and is valid from May 29, 2009.

10 year warranty

In line with high quality level of performances of Aircom's products, Aircom offers on its products a 10-year warranty against any defective material in Aircom's fittings and aluminium pipes.

For more information, please refer to Aircom's Liability Terms.





Short installation time

The quick and easy assembly of our piping systems is the result of an innovative technology, with an instant connection of the fitting components to the aluminium pipe.

Light weight, but powerful

Quick Line Technopolymer product range comes in following diameters:

16-20-25-32-40-50-63 mm

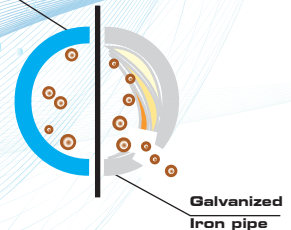
A careful study and design of dimensions and materials enabled to achieve a light and functional, all-technopolymer product in a wide range of sizes, allowing you to create your systems without any problems.

Air quality and maintenance

Owing to full technopolymer construction, air quality keeps constant features from compressor outlet up to all end user points. Minimum roughness of internal pipe surfaces allows optimal air flow. The high quality and high resistance features of our fittings will significantly reduce maintenance costs.



**Aluminium Pipe
AIRCOM**



Modularity and resistance

Our modular and lightweight technopolymer systems are an optimal solution to reduce installation time.

Owing to careful study of components and of materials, our fittings feature noticeable resistance to corrosion, mechanical shocks and thermal variations.

Quick Line Technopolymer is the most advanced evolution in the field of systems for compressed air and pressurized fluids distribution.



Pipe

CODE	ø (6 m)
QLTUAL6020	20
QLTUAL6025	25
QLTUAL6032	32
QLTUAL6040	40
QLTUAL6050	50
QLTUAL6063	63
QLTUAL6080	80
QLTUAL6110	110

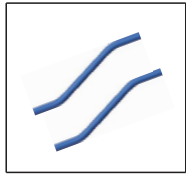
CODE	ø (4 m)
QLTUAL4016	16
QLTUAL4020	20
QLTUAL4025	25
QLTUAL4032	32
QLTUAL4040	40
QLTUAL4050	50
QLTUAL4063	63

CODE	ø (6 m)
QLTUALGY6020	20
QLTUALGY6025	25
QLTUALGY6032	32
QLTUALGY6040	40
QLTUALGY6050	50
QLTUALGY6063	63
QLTUALGY6080	80

CODE	ø (6 m)
QLTUALG6020	20
QLTUALG6025	25
QLTUALG6040	40
QLTUALG6063	63

Double bend

CODE	ø (0.5 m)
QLSCIO16	16
QLSCIO20	20
QLSCIO25	25



Couplings

CODE	ø
QLMAPAO16	16
QLMAPAO20	20
QLMAPAO25	25
QLMAPAO32	32
QLMAPAO40	40
QLMAPAO50	50
QLMAPAO63	63



Sliding couplings



CODE	Ø
QLMASPA032	32
QLMASPA040	40
QLMASPA050	50
QLMASPA063	63

90° Elbows



CODE	Ø
QLGO90PA016	16
QLGO90PA020	20
QLGO90PA025	25
QLGO90PA032	32
QLGO90PA040	40
QLGO90PA050	50
QLGO90PA063	63

45° Elbows



CODE	Ø
QLGO45PA020	20
QLGO45PA025	25
QLGO45PA032	32
QLGO45PA040	40
QLGO45PA050	50
QLGO45PA063	63

90° elbows, male thread



CODE	Ø
QLGO90PM020048	20x1/2"
QLGO90PM025048	25x1/2"
QLGO90PM025068	25x3/4"

* Also available with NPT threads

End cap



CODE	Ø
QLCAPA016	16
QLCAPA020	20
QLCAPA025	25
QLCAPA032	32
QLCAPA040	40
QLCAPA050	50
QLCAPA063	63

Tee



CODE	Ø
QLTEPA016	16
QLTEPA020	20
QLTEAL025	25
QLTEAL032	32
QLTEAL040	40
QLTEAL050	50
QLTEAL063	63



Reducing tee

CODE	Ø
QLTRPA020016	20x16
QLTRPA025016	25x16
QLTRPA025020	25x20
QLTRPA032020	32x20
QLTRPA032025	32x25
QLTRPA040025	40x25
QLTRPA040032	40x32
QLTRPA050032	50x32
QLTRPA050040	50x40
QLTRPA063040	63x40
QLTRPA063050	63x50



Threaded tee, female thread

CODE	Ø
QLTPPA020048	20x1/2"
QLTPPA025048	25x1/2"

* Also available with NPT threads



Reduction

CODE	Ø
QLRIDPA025020	25x20
QLRIDPA032025	32x25
QLRIDPA040025	40x25
QLRIDPA040032	40x32
QLRIDPA050040	50x40



Union, male threaded

CODE	Ø
QLMNPA016048	16x1/2"
QLMNPA020048	20x1/2"
QLMNPA020068	20x3/4"
QLMNPA025048	25x1/2"
QLMNPA025068	25x3/4"
QLMNPA025088	25x1"
QLMNPA032088	32x1"
QLMNPA032108	32x1.1/4"
QLMNPA040088	40x1"
QLMNPA040108	40x1.1/4"
QLMNPA040128	40x1.1/2"
QLMNPA050128	50x1.1/2"
QLMNPA050168	50x2"
QLMNPA063168	63x2"

* Also available with NPT threads

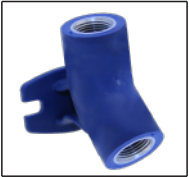
Single port manifold, female thread



CODE	Ø
QLAPM016	16x1/2"
QLAPM020	20x1/2"

* Also available with NPT threads

Single port manifold, f thread + threaded inlet



CODE	Ø
DIRAPM048	1/2"x1/2"

* Also available with NPT threads

Double port manifold, female thread



CODE	Ø
QLAPL016	16x1/2"
QLAPL020	20x1/2"
QLAPL025	25x1/2"

* Also available with NPT threads

Double port manifold, f thread + threaded inlet



CODE	Ø
DIRAPL048	1/2"x1/2"
DIRAPL068	3/4"x1/2"

* Also available with NPT threads

Multiple manifold



CODE	Ø
DIRPMU068028038	1/2"x1/4"x3/8"

* Also available with NPT threads

Single action, pneumatic valve



CODE	Ø
QLVAVIP032	32
QLVAVIP040	40
QLVAVIP050	50
QLVAVIP063	63

Quick Line SS ball valve



CODE	Ø
QLVAINOX025	25
QLVAINOX032	32
QLVAINOX040	40
QLVAINOX050	50
QLVAINOX063	63

Quick Line SS ball valve, female thread



CODE	Ø
QLVAINOXF025088	25x1"
QLVAINOXF032128	32x1.1/2"
QLVAINOXF040128	40x1.1/2"
QLVAINOXF050168	50x2"
QLVAINOXF063168	63x2"

Quick Line ball valve, male threaded



CODE	Ø
QLVAM016048	16x1/2"
QLVAM020048	20x1/2"
QLVAM025068	25x3/4"

* Also available with NPT threads

Quick Line ball valve, female threaded



CODE	Ø
QLVAF016048	16x1/2"
QLVAF020048	20x1/2"
QLVAF025068	25x3/4"

* Also available with NPT threads

Single port manifold with QL ball valve



CODE	Ø
QLAPMVA016	16
QLAPMVA020	20

* Also available with NPT threads

Double port manifold with QL ball valve



CODE	Ø
QLAPLVA016	16
QLAPLVA020	20
QLAPLVA025	25

* Also available with NPT threads

Aluminium spigot



CODE	Ø
QLPUNM016038	16 x 3/8"
QLPUNM020048	20 x 1/2"
QLPUNM020068	20 x 3/4"
QLPUNM025088	25 x 1"
QLPUNM032108	32 x 1.1/4"
QLPUNM040128	40 x 1.1/2"
QLPUNM050168	50 x 2"
QLPUNM063168	63 x 2"

* Also available with NPT threads

Reductions



CODE	Ø
QLRIDMF108088	1.1/4"x1"
QLRIDMF128108	1.1/2"x1.1/4"
QLRIDMF168128	2"x1.1/2"
QLRIDMF208168	2.1/2"x2"

* Also available with NPT threads



Quick branch plug

CODE	Ø
QLDERPA025016	25x16
QLDERPA025020	25x20
QLDERPA032016	32x20
QLDERPA032020	32x20
QLDERPA040016	40x16
QLDERPA040020	40x20
QLDERPA040025	40x25
QLDERPA050016	50x16
QLDERPA050020	50x20
QLDERPA050025	50x25
QLDERPA063020	63x20
QLDERPA063025	63x25
QLDERPA063032	63x32
QLDERPA080020	80x20
QLDERPA080025	80x25
QLDERPA080032	80x32
QLDERPA110025	110x25
QLDERPA110032	110x32



Quick branch plug female threaded

CODE	Ø
DIRDERFF025048	25x1/2"
DIRDERFF032048	32x1/2"
DIRDERFF040048	40x1/2"
DIRDERFF040068	40x3/4"
DIRDERFF050048	50x1/2"
DIRDERFF050068	50x3/4"
DIRDERFF063048	63x1/2"
DIRDERFF063068	63x3/4"
DIRDERFF063088	63x1"

* Also available with NPT threads

Deburrer



CODE	Ø
DIRSM016050	16-50
DIRSM063110	63-110

Flexible hose



CODE	Ø
QLFLEX020	20
QLFLEX025	25
QLFLEX032	32
QLFLEX040	40
QLFLEX050	50
QLFLEX063	63

CODE	Ø
QLFLEXM088	1x1"
QLFLEXM108	1.1/4"x1.1/4"
QLFLEXM128	1.1/2"x1.1/2"
QLFLEXM168	2"x2"

Pipe brackets, with M8 insert piece



CODE	Ø
DIRFEM8016CF	16
DIRFEM8020CF	20
DIRFEM8025CF	25
DIRFEM8032CF	32
DIRFEM8040CF	40
DIRFEM8050CF	50
DIRFEM8063CF	63

Pipe bracket, with metal collar



CODE	Ø
DIRFCOLO63	63

QL nut wrench

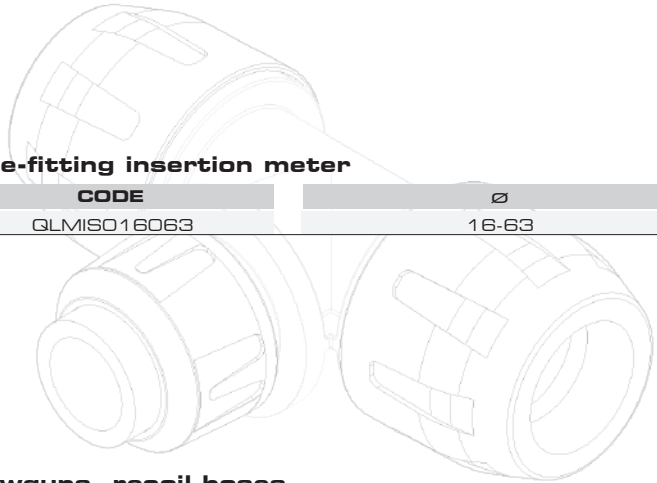


CODE	Ø
QLCLE016020	16-20
QLCLE025032	25-32
QLCLE040050	40-50
QLCLE063	63

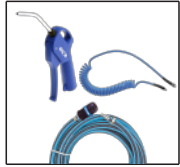
Pipe-fitting insertion meter



CODE	Ø
QLMISO16063	16-63



Blowguns, recoil hoses



CODE	Ø
DIRPISO28	1/4"

CODE	Ø
DIRSPIR66	6,5x10 *

CODE	Ø
DIRPROLO8	8,5x15 **

* 6 m - **10 m

Expansion joint



CODE	Ø
DIRDILO63DIN	63

* Also available ANSI

Spacers



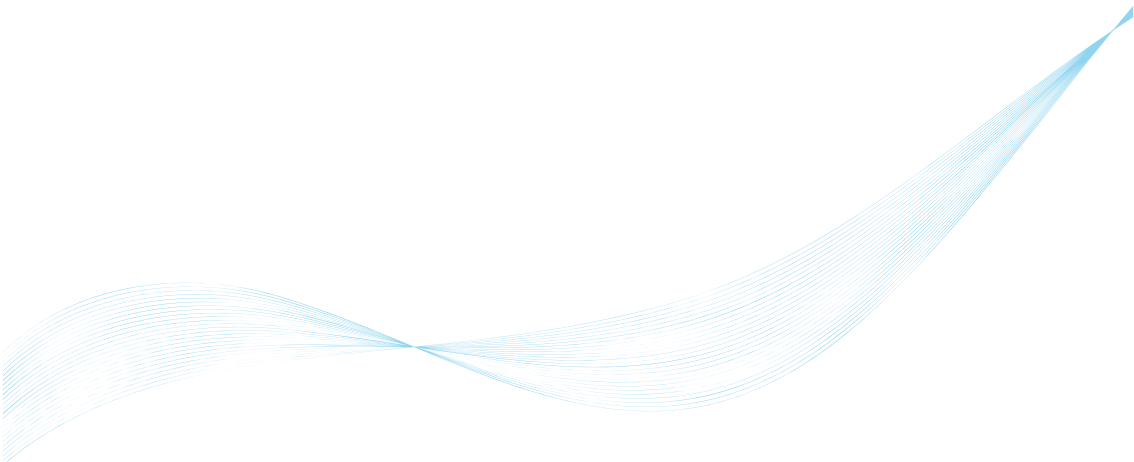
CODE	Ø
DIRSPE020032	20-32
DIRSPE040063	40-63

Flanges



CODE	Ø
DIRFLFF168DIN	63

* Also available ANSI



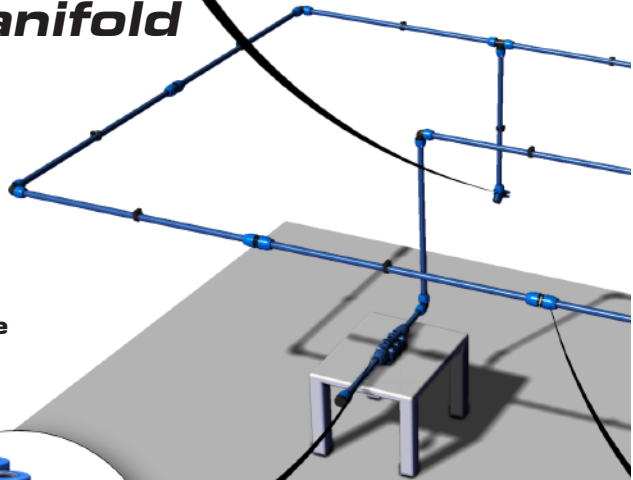
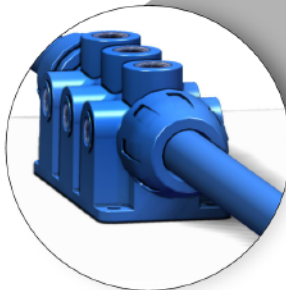
Quick Line Technopolymer

is the ideal solution for the creation of distribution systems for compressed air and pressurized fluids, owing to the immediacy of connections and ease of use.

Single port manifold female thread

- **Quick & Easy**
- **Flexible & highly compatible**
- **No pressure loss**
- **Corrosion resistant**

Multiple manifold

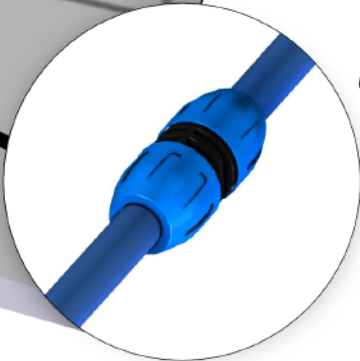




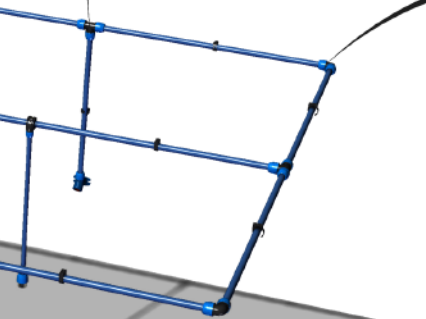
Tee



90° Elbow



Coupling





QUICK

With Quick Line Technopolymer product line you can reduce installation time by about 45% compared to traditional systems.

EASY

Owing to innovative Quick Line technology, easy-mounting pipe assembly and direct connection fittings will enable you to create your piping system in few, easy steps.

RELIABLE

Durability and corrosion resistance of our products provide you a unique, comprehensive system. Careful study and design of shapes and of materials also grant extremely low pressure drops without air leakages, with resulting remarkable energy savings.

AIRCOM s.r.l
via Trattato di Maastricht
15067 Novi Ligure (AL) - ITALY
Ph. +39 0143 329502 - Fax +39 0143 358175

www.aircomsystem.com
info@aircomsystem.com