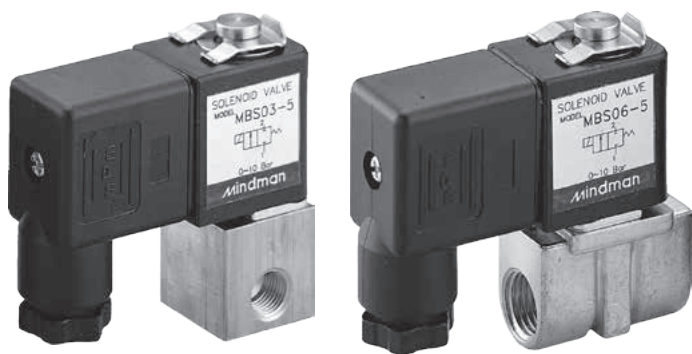


SOLENOID ACTUATED VALVES SERIES MBS

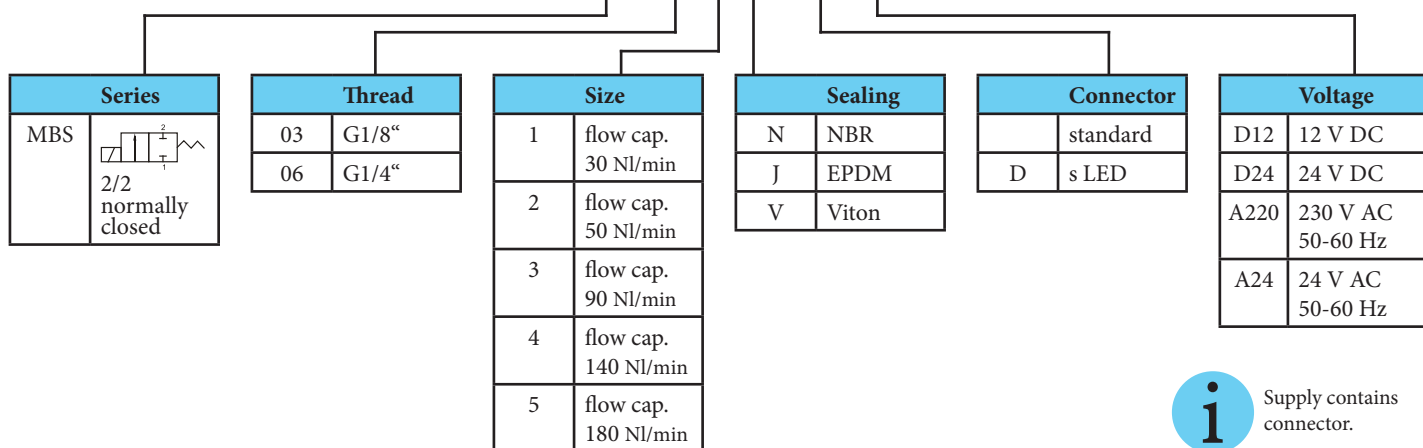


Direct solenoid actuated valve 2/2 normally closed with orifice 1 to 2.4 mm. The following sealing are available: NBR, EPDM and viton (teflon on request). Available fluid: air, inert gas, water, vacuum, oil, etc. Coil with Ex approval EExm II T4, or EEx ia II C T6 PTB are available on request.

Series	MBS				
Ports	G1/8", G1/4"				
Size	1	2	3	4	5
Flow capacity [Nl/min]	30	50	90	140	180
Working pressure [MPa] for AC voltage	0 to 4.0	0 to 3.5	0 to 3.0	0 to 2.5	0 to 2.0
Working pressure [MPa] for DC voltage	0 to 3.0	0 to 2.4	0 to 1.2	0 to 1.0	0 to 0.7
Power input [W, VA]	6.8W for DC voltage, 8VA for AC voltage - inrush, 6VA hold				
Coil voltage tolerance	±8%				
Temperature range [°C]	ambient temperature -15 to +50, medium temperature -5 to +80 for NBR sealing, -10 to +120 for EPDM and viton sealing				
Enclosure	IP65 with sealed and fastened connector				
Installing position	free, coil upright is recommended				
Housing material	brass				

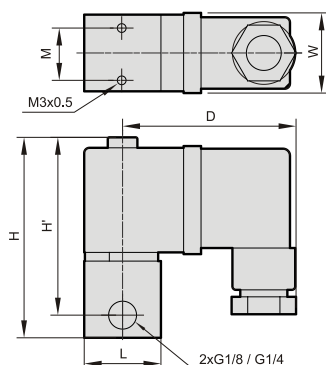
Order codes

P MBS 03 2 N 3 D D24



i Supply contains connector.

Dimensions



Ports thread	D	H	H'	L	M	W	Weight [kg]
G1/8"	50	57	51	□22	15	23	0.15
G1/4"	50	61	51	33	11.2	23	0.15