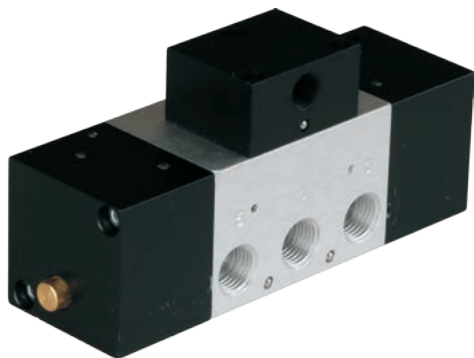


PNEUMATICALLY ACTUATED FLIP-FLOP VALVE



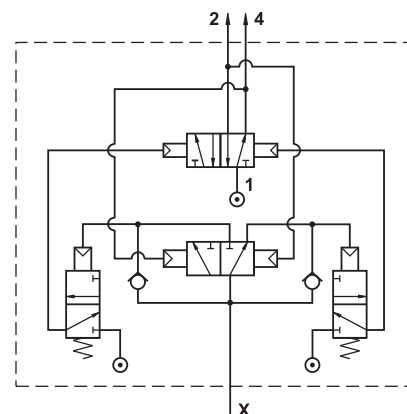
The pneumatically actuated valve automatically switches positions after applying a short signal to the control port marked X. After applying pressure to the control port, the position of the valve switches and if there is a pneumatic cylinder connected to the output, for example, it will extend. The signal can be short, or it can last for a long time. The moment of signal introduction is important. As soon as the pressure of the control signal is exhausted - the signal is interrupted, the valve is ready for switching. After pressure is applied again to the control port, the valve will switch and the cylinder will begin to retract. In this way, the valve can be reversed using a single control signal. The valve can also be switched manually in the event of a control signal failure. The control signal is independent of the working supply and can have a different pressure.

This valve series contains rubber gaskets.

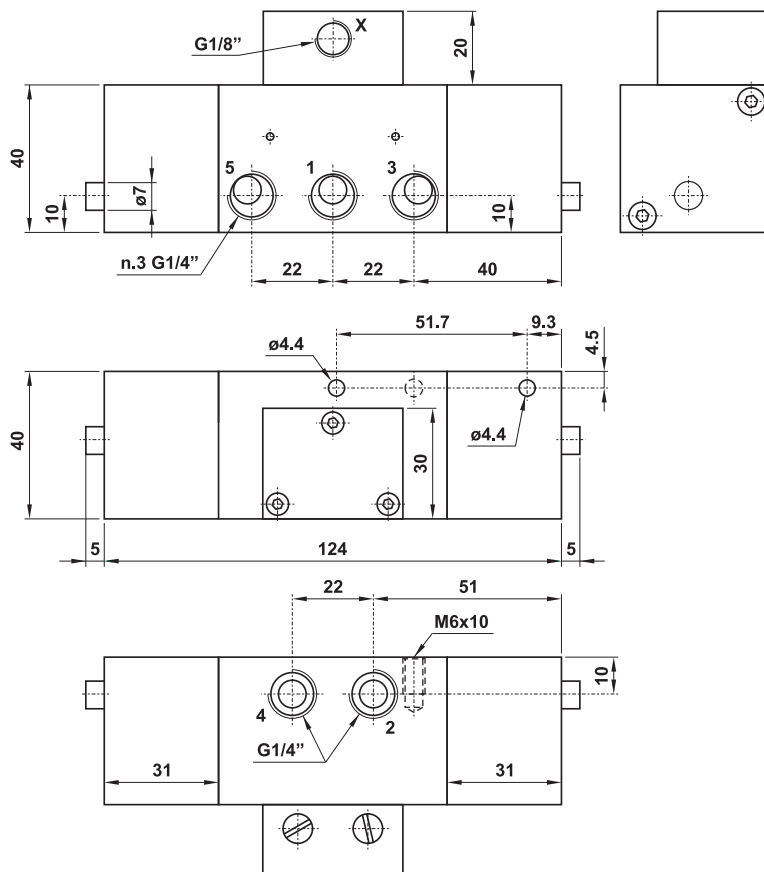
| Ports | G1/4" |
|----------------------------|-------------------------|
| Flow capacity [Nl/min] | 1100 |
| Working pressure [MPa] | 0,3 to 1,0 |
| Pilot pressure range [MPa] | 0,2 to 1,0 |
| Temperature range [°C] | -20 to +60 |
| Working medium | modified compressed air |
| Weight [kg] | 0,59 |

Order code

| Port | G1/4" |
|-----------|---------------------|
| Valve 5/2 | 2552 7070 0600 0007 |

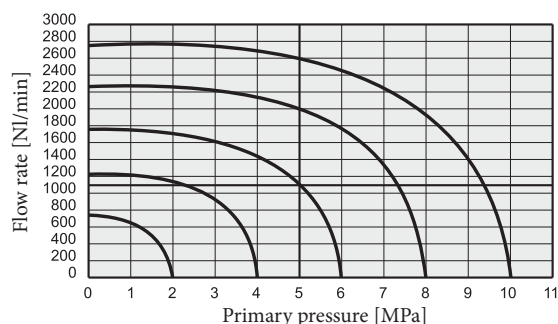


Dimensions



Technical data

Flow rate



Materials

- body - aluminium alloy
- spring - stainless steel
- seals - NBR
- spool - nickel plated aluminium alloy
- internal parts - brass