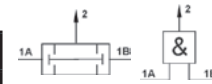
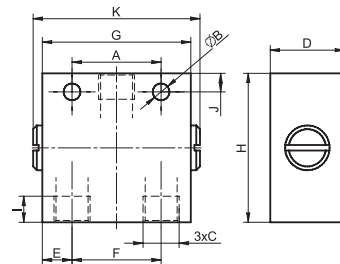


**Logical gate AND (production)**

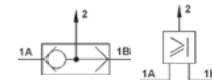
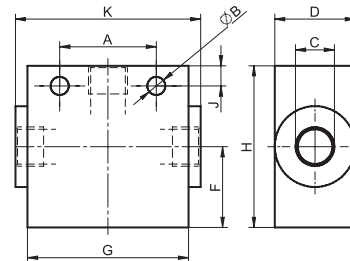
Order codes	C-Thread	A	B	D	E	F	G	H	I	J	K	Weight [kg]
2760 0100 0400 0000	G1/8 <sup>c</sup>	24	4.5	20	8	24	40	35	7	5	45	0.12

Working pressure	0.2 to 1.0 MPa
Temperature range	-20°C to +80°C
Working medium	modified compressed air


**Logical gate OR (sum)**

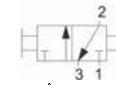
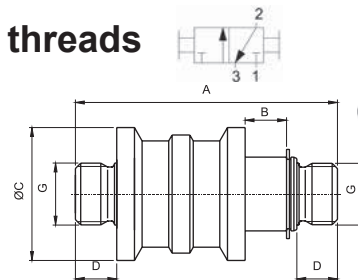
Order codes	C-Thread	A	B	D	F	G	H	I	J	K	Weight [kg]
2760 0200 0400 0000	G1/8 <sup>c</sup>	24	4.5	20	20	40	40	7	5	45	0.12

Working pressure	0.2 to 1.0 MPa
Temperature range	-20°C to +80°C
Working medium	modified compressed air


**Manually operated slide valve 3/2 with external threads**

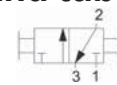
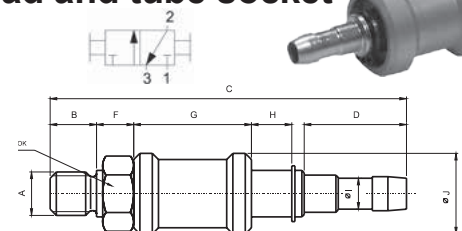
Order codes	G - Thread	A	B	C	D	Weight [kg]
2740 3200 1006 0600	G1/4 <sup>c</sup>	71	10	24	10	0.09
2740 3200 1008 0800	G3/8 <sup>c</sup>	87	12	34	10	0.20
2740 3200 1010 1000	G1/2 <sup>c</sup>	89	14	45	14	0.26

Working pressure, temperature and medium see below


**Manually operated slide valve 3/2 with external thread and tube socket**

Order codes	A - Thread	B	C	D	F	G	H	I	J	OK	Weight [kg]
2740 3200 2006 3300	G1/4 <sup>c</sup>	10	77	21	6	27	10	8	24	17	0.08

Working pressure, temperature and medium see below


**Manually operated slide valve 3/2 with internal threads**

Order codes	G - Thread	J <sub>s</sub>	D <sub>2</sub>	M	L	OK	Flow capacity [Nl/min]
N530-000	G1/8 <sup>c</sup>	4	25	12	48	14	700
N530-001	G1/4 <sup>c</sup>	7	35	12	58	19	1100
N530-002	G3/8 <sup>c</sup>	10	38	12	68	22	1500
N530-003	G1/2 <sup>c</sup>	15	48	15	88	27	2200

Working pressure	0 to 1.0 MPa (2740...), 0 to 1.6 MPa (N530)
Temperature range	-10°C to +80°C
Working medium	modified compressed air

