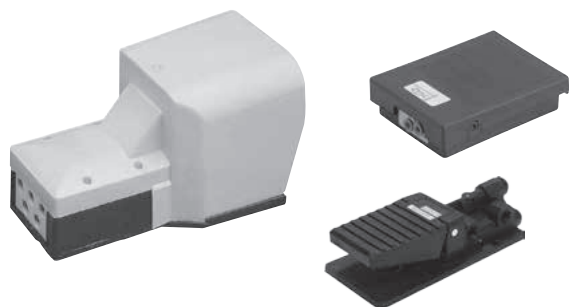


# FOOT ACTUATED VALVES SERIES PED304, PED502 AND 228



Valves are available with or without protecting cap. Protecting cap protect foot pedal to unwanted activating. Valves with protecting cap are available with or without detent in activated position. Valves without protecting cap are available only without detent.

This valve series contains rubber gaskets.

Type	3/2 without protecting cover	5/2 without protecting cover	5/2 with protecting cover
Series	PED304	228	PED502
Ports	tube 4/2	tube 6/4; G1/8" for exhausts (3.5)	G1/4"
Flow capacity [Nl/min]	100	540	600
Working pressure [MPa]	0.2 to 1.0		
Temperature range [°C]	-20 to +60		
Working medium	modified compressed air		
Weight [kg]	0,19	0,18	0,83 (0,85 with detent)

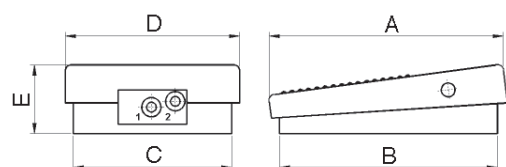
## Order codes

Type	Order codes
Type 3/2 without protection cover, for tube 4/2, series PED304	NZFD FA30 00L0 0000
Type 5/2 without protection cover, for tube 6/4, exhaust ports G1/8", series 228	2552 4090 3200 0001

Type	Order codes
Type 5/2 with protection cover, thread G1/4", series PED502	NZF2 FA40 00G0 0000
Type 5/2 with protection cover with detent, thread G1/4", series PED502	NZF2 FD40 00G0 0000

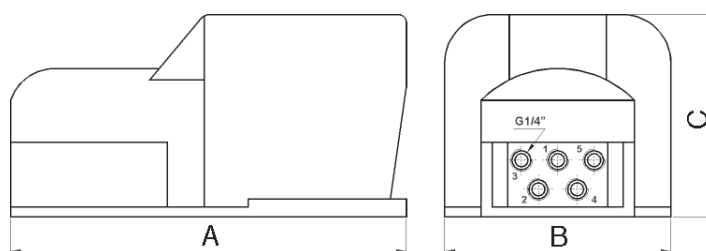
## Dimensions

### Type 3/2 without protecting cover, series PED304



A	B	C	D	E
104	95	76	69	31

### Type 5/2 with protecting cover, series PED502



A	B	C
245	140	145

### Type 5/2 without protecting cover, series 228

