

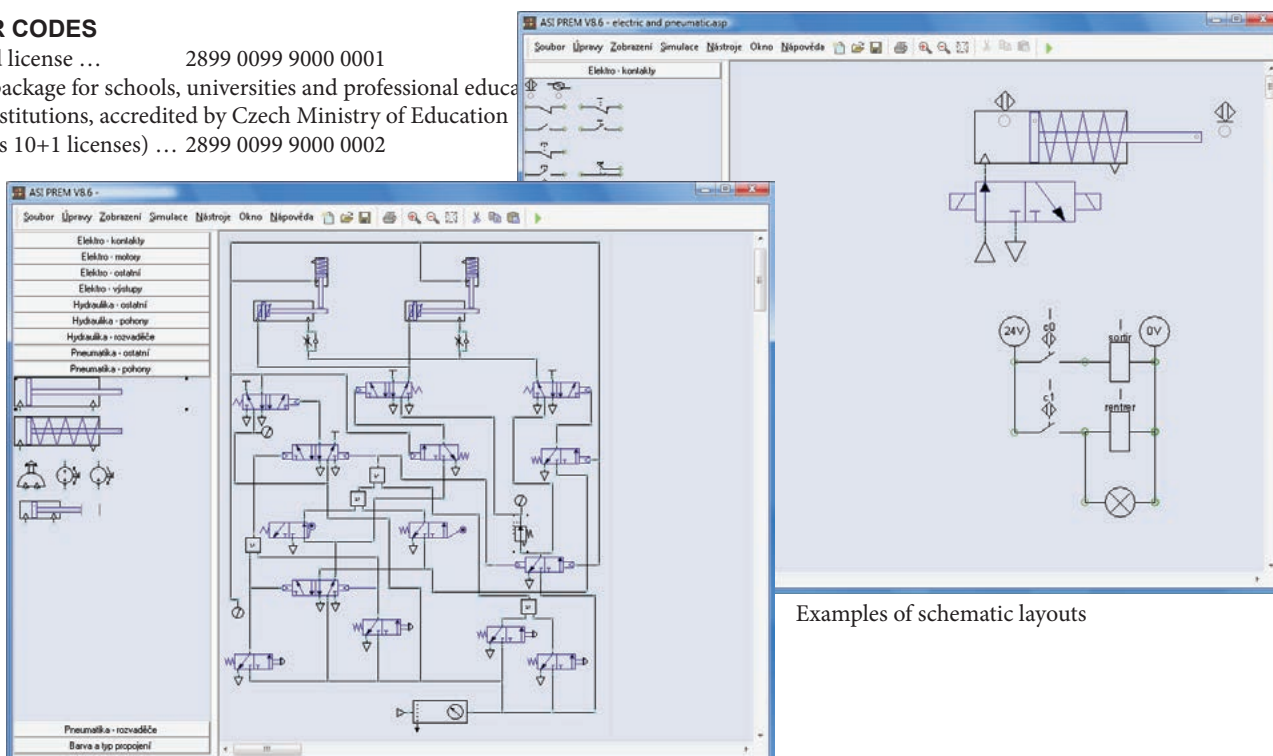


If you are designing pneumatic, electric, or hydraulic schematic layouts or their combination, you will surely appreciate our new software in our offer. It is software **AUTOMSIM PREMIUM** designed by Irai France for creation and simulation of schematic layouts.

ORDER CODES

standard license ... 2899 0099 9000 0001

license package for schools, universities and professional educational institutions, accredited by Czech Ministry of Education (contains 10+1 licenses) ... 2899 0099 9000 0002

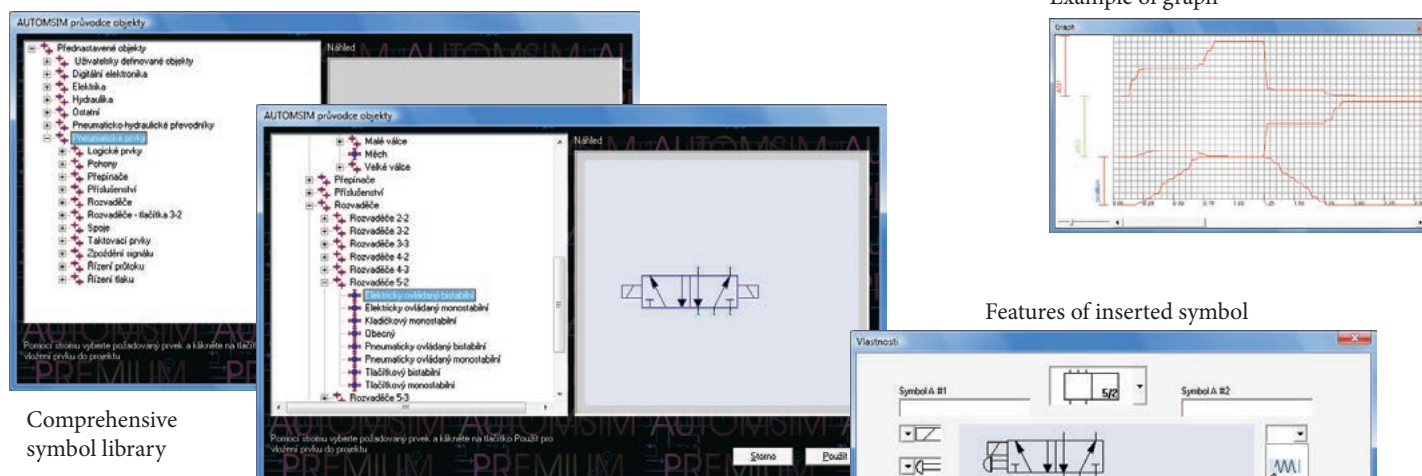


Examples of schematic layouts

Using the symbol library, you can simply insert the right symbol, which is necessary in your layout. If there is no specific symbol in the library, it can be easily modified from similar symbol by changing the properties. Pneumatic cylinders can be linked to proximity switches or roller lever valves, proximity switches to relays, relays to valve coils, etc. So it isn't just drawing of layouts, but a circuit, which you can simply build and simulate it during operation and check, if the function conforms the submission. Of course, the pressure level as well as percentage of adjustment of the speed control and many other properties can be set and changed during simulation. It is also possible to display graph with various values.

You can also create the layout of your current circuit, which you are having problems with and check, where the critical points are. Layouts can be printed and exported into EMF file format, which is a standard format that can be imported into any office software. If you fill in fields like designation, supplier, description and other during inserting the symbols into the layout, the automatic creating of bill of material is available.

Example of graph



Comprehensive symbol library

Features of inserted symbol

AUTOMSIM PREMIUM is excellent for creating layouts and their functional simulations not only for its simplicity, but also for its price!
The full functional demo is available. Please contact us about the possibility of delivery.