

International Joint Venture Partners

- Anest Iwata Co., Ltd – The largest Japanese Painting Equipment & Air Compressor manufacturer.
- Toyota Tsusho Corporation -Toyota-owned trading company.
- Takamaz Machinery Co., Ltd – Japanese professional CNC Lathe manufacturer, public listed company.
- Nippon Cable Co., Ltd - The largest parking equipment manufacturer in Japan.
- Mectron Inc. – Japanese Machine Tools manufacturer.
- MARUBENI Corp. – The Top 5 trading company in Japan.
- WAIDA MFG. Co., Ltd. – Japanese ultra-precision grinder manufacturer.
- CITIZEN Machinery MIYANO Corp. – CITIZEN group, precision lathe manufacturer
- YAMASAN TEKKO - Japanese machining specialist over 40 years.
- SUMIZAWA TEKKO - Japanese machining specialist over 40 years.

Global Major Customer

Aerospace Industry

- MBDA
- BOEING
- EADS
- NASA
- MESSIER BUGATTI
- MOTOR SICH
- VOLVO AERO
- SNECMA
- TAI TUSAS AEROSPACE
- BRITISH NUCLEAR POWER

Automobile Industry

- TOYOTA
- HONDA
- GM
- FORD
- DAIMLER CHRYSLER
- DELPHI
- BMW
- VOLKSWAGEN
- MAN
- FERRARI
- PSA
- GEORGFISCHER

Mold Industry

- FORGESDE BOLOGNE
- ROSSIGNOL
- SALOMON
- SIEMENS
- CATERPILLAR
- CARRIER



EMO 2013 - Airport Advertising



EMO 2015 - Airport Advertising



TIMTOS 2013 – Bus Advertising



TIMTOS 2015 - Exhibition Center Advertising



Establish 53 production bases of machine tools in the world and create 39 brands

Technological FFG Drives the Future



HEADQUARTERS
No. 186, Yong Chi Road, Taipei, Taiwan.
Tel: +886-2-2763-9696
Fax: +886-2-2768-0636/37/39
www.ffg-tw.com
E-mail: chairom@fairfriend.com.tw



FEELER MACHINE TOOLS DIVISION
No. 12, Jingke Rd., Nantun Dist., Taichung City, Taiwan
Tel: +886-4-2359-4075
Fax: +886-4-2359-4873
www.feeler.com
E-mail: sales@feeler.com



ISO 9001
ISO 14001



- World 3rd Largest Machine Tools Group.
- World No.1 Largest Machine Tools Group For Automotive Turnkey.
- No. 1 manufacturer of VMC in the world.
- 60,000 units of CNC machine tools installed around the globe – the No. 1 brand in Greater China.
- FFG became the TOP 20 manufacturer of CNC machine tools in the world since 2009.
- HVTC Fair Friend College of Electromechanics attracts 2,300 students.
- FFG consists of 98 companies scattered around world, and there are 3 listed companies at stock exchange market Among them, 1 in Hong Kong and 2 in Taiwan.
- Awarded "TAIWAN TOP 100 BRANDS" by Taiwan Ministry of Economic Affairs, as a high recognition to FFG and FEELER's efforts in quality enhancement and brand promotion.
- The only machine tool company won the National Quality Award, and the Gold Medal of the National Award of Excellence.
- The best quality and service machine tool manufacturer from Taiwan, evaluated by the famous magazine, Asia Pacific Metal Working Equipment News.
- The only machine tool group reported by Forbes, Business Week, the Wall Street Journal, National TV in Spain, and China central TV
- Won the prize of 2008 AI Outstanding Product Award and was in the TOP 100 excellence equipment suppliers, together with world-famous machine tool manufacturers such as DMG, MAZAK, MORI SEIKI, MAKINO, MAG and AgieCharmilles, and FFG was ranked No.1
- 2012 TAIWAN authoritative commercial magazine "Common Wealth" TOP 1000 Manufacturers: Fair Friend Ent., Co., Ltd. and Good Friend Int'l Holdings Inc. ranking No.1 for Machinery industry and Machine Tools, respectively.



● Fair Friend – Nantun ● Leadwell – Taichung ● Sanco – Sanyi ● Equiptop - Taichung ● Ecoeca – Taichung



● Ikegai Corporation - Japan Land 133,000㎡/ Plant 65,000㎡ ● SNK – Japan(Hiroshima Plant) Land 133,000㎡/ Plant 121,000㎡ ● SNK-Japan(Shinodayama Plant) Land 210,000㎡/ Plant 205,000㎡ ● NISSIN-Japan ● F.T. Japan Company Ltd. (Takamaz in Japan)



● FFG DMC - Korea ● DSK - Korea ● SMS – U.S.A. ● MAG PORT HURON - U.S.A. ● JOBS,Rambdaudi,Sachman,Sigma-Italy ● IMAS - Italy



● Pfiffner - Switzerland ● Pfiffner - Switzerland ● Pfiffner - Germany ● Hüller Hille - Germany ● Hessapp - Germany



● Modul - Germany ● VDF Boehringer - Germany ● Witzig & Frank - Germany ● Hangzhou Good Friend – Hsiaoashan (66,000 m²) ● Hangzhou Good Friend – Jiangdong Technology Park (666,000 m²) ● Hangzhou Global Friend – Xiasha (59,400 m²) ● Hangzhou Ever Friend – Xiasha (82,500 m²)



● Good Friend China Headquarters – Hangzhou ● Glory Friend / ANEST IWATA – Jiangdong ● Hangzhou Good Friend – Xiasha Technology Park (231,000 m²) ● Hangzhou Leadwell – Xiasha (66,000 m²) ● Hangzhou Takamaz - Jiangdong ● FFG Institute of Electromechanics (2,300 students) – Xiasha (462,000 m²)

CNC MACHINE TOOLS

CNC Lathes(Linear)

FTC series



CNC Turning Center
FTC-10 / 20 / 20L / 30

FTC-20
FTC-10 / FTC-20, FTC-20L / FTC-30
Max.turning dia: 240 / 350 / 450 mm
Power chuck size: 6"/8"/10"

FTC-350/350L/350XL
Slant Bed CNC Turning Center
FTC-300 / 350 / 350L(MC) / 350XL(MC)
FTC-350LY / 350SLY
FTC-450(MC) / 640(MC) / 640L (MC)
FTB-350/350L/350XL



FTC-350
FTC-300
Max. turning dia: 300mm
Chuck dia: 6"
FTC-350 / FTC-350L(MC) /
FTC-350XL(MC) / FTC-350LY / FTC-350SLY
Max.turning dia: 350 mm
Chuck dia: 8" (FTC-350SLY: 8"/6")



FTC-450(MC)
Max.turning dia: 450 mm(260mm)
Chuck dia: 10"
FTC-640 / FTC-640L
Max.turning dia: 550 mm
Chuck dia: 15"
FTB-350 / FTB-350L / FTB-350SLY
Max.turning dia: 400 mm
Chuck dia: 210mm

CNC Lathes(Boxway)

HT series



HT-30Y / 30MC / 30SY
HT-30Y
HT-30Y / 30MC / 30SY
Max.turning dia: 356 mm
Y-axis travel: 100 (+50) mm
Power chuck size: 8", 10", 10"

FT series



FT-200(MC) / 250(MC) /
FT-250SY(MC)
FT-350(MC) / 350AL(MC)
FT-400 / 400MC
FT-400AL / 400ALMC
FT-250
FT-200(MC) / 250(MC) / 250SY(MC) /
FT-350(MC) / 350AL(MC)
Max. turning dia.: 330 / 420 / 620 / 620
Power chuck size: 8" / 10" / 12" / 15"
FT-400/400MC/400AL/400ALMC
Max. turning dia.: 510 / 440 / 510 / 440
Power chuck size: 12" / 12" / 15" / 15"

Vertical CNC Lathes

FVT series



FVT-450 / 600 / 1000 / 1600(MC)
FVT-2000(MC) / 2500(MC) / 3000(MC)
FVT-1000
Max. Swing: 1,100mm
Max. turning dia: 1,000mm
Rapid traverse X/Z: 20m/min

Vertical Machining Center(Linear)

FVP series



FVP-800(A) / 1000(A)
FVP-1300(A)
FV-1500(A) / 1600(A)
FVP-1300A
FVP-800 (A) : 800 x 500 x 505 mm
FVP-1000 (A) : 1,020 x 500 x 505 mm
FVP-1300 (A) : 1,300 x 610 x 560 mm
FV-1500 (A) : 1,525 x 760 x 650 mm
FV-1600 (A) : 1,600 x 800 x 800 mm

VMP series



VMP-23(A) / 30(A) / 32(A) / 40(A)
VMP-23Aapc / 32Aapc / 45(A) / 50(A)
VM-45S(A)
VMP-40A
VMP-23(A) : 580 x 420 x 510 mm
VMP-23Aapc : 580 x 420 x 510 mm
VMP-30(A) : 760 x 420 x 510 mm
VMP-32(A) : 820 x 520 x 505 mm
VMP-32Aapc : 800 x 520 x 505 mm
VMP-40(A) : 1,020 x 520 x 505 mm
VM-45S(A) : 1,100 x 700 x 600 mm
VMP-45(A) : 1,100 x 610 x 600 mm
VMP-50(A) : 1,300 x 610 x 600 mm

QMP series



QMP-23A / 23Aapc / 30A
QMP-32A / 40A
QMP-32Aapc
QMP-32Aapc
QMP-23A : 580 x 420 x 510 mm
QMP-23Aapc : 580 x 420 x 510 mm
QMP-30A : 760 x 420 x 510 mm
QMP-32A : 820 x 520 x 505 mm
QMP-32Aapc : 800 x 520 x 505 mm
QMP-40A : 1,020 x 520 x 505 mm

Vertical Machining Center(Linear)

HV series



HV-32A / 32Aapc / 40A
HV-40A
HV-32A : 800 x 520 x 505 mm
HV-32Aapc : 800 x 520 x 505 mm
HV-40A : 1,000 x 520 x 505 mm

Vertical Machining Center(Boxway)

NBP series



NBP-1000(A)
NBP-1100(A) / 1300(A)
NBP-1300A
NBP-1000 (A) : 1,000 x 610 x 600 mm
NBP-1100 (A) : 1,100 x 610 x 600 mm
NBP-1300 (A) : 1,300 x 610 x 600 mm

VB series



VB-1400A / 1650A /
VB-1900A / 2200A
VB-1650A
VB-1400A : 1,400 x 715 x 700 mm
VB-1650A : 1,650 x 825 x 700 mm
VB-1900A : 1,900 x 900 x 800 mm
VB-2200A : 2,200 x 1,000 x 800 mm

5-Axis Mill-Trun Machining Center

MT series



MT-1000
MT-1000:
1200 x 1230 x 1000 mm
B-axis rotation angle:
+180° ~ -30°
C-axis rotation angle:
360°

5-Axis Vertical Machining Center

U series



U-600/800
U-800
U-600:
460 x 520 x 400 mm
A-axis rotation angle: +40° ~ -110°
C-axis rotation angle: 360°
U-800:
800 x 935 x 640 mm
A-axis rotation angle: +120° ~ -120°
C-axis rotation angle: 360°

SV series



SV-350
SV-350
SV-350:
350 x 300 x 250
BT30-10T

Horizontal Machining Center

FMH series



FMH-400 / 500 / 630 / 800
FMH-800
FMH-400 : 610 x 560 x 560 mm
FMH-500 : 762 (730) x 710 x 710 mm
FMH-630 : 1000 x 850 x 850 mm
FMH-800 : 1300 x 1020 x 1100 mm

EH series



EH-320/320APC/500/500-5AX
EH-320 apc
EH-320 : 300x320x270mm
EH-320APC : 300x320x270mm
EH-500 : 750 x 650 x 500 mm
EH-500-5AX : 750 x 650 x 500 mm

CNC MACHINE TOOLS

Drilling & Tapping Center

TV series



TV-510A
TV-510A
TV-510A : 510 x 400 x 400 mm

CNC Horizontal Boring & Milling Machine

SHM series



SHM-630L
SHM-800/800L
SHM-800
SHM-630L: 1,400 x 1,150 x 1,000 mm
SHM-800L: 1,500 x 1,600 x 1,200 mm
SHM-800: 2,000 x 1,100 x 1,200 mm

Grinder

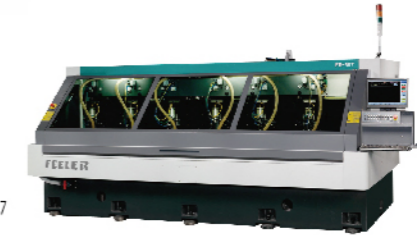
FG-D series



Double Column Grinder
FG-DI5300 / DI5400
FG-DI5500
FG-DI5300
Hydraulic motor: 15HP
Min. vertical step downfeed: 0.005 mm / min
Spindle motor:
horizontal 15HP / 6P / Vertical 5HP / 4P
Grinding wheel size:
horizontal 510 x 100 x 127 / vertical 355 x 50 x 127
Grinding surface:
2,050 x 3,200 / 2,050 x 4,200 / 2,050 x 5,200 mm

PCB Routing Machine

FR-N57 series



FR-157 / 257 / 457 / 557 / 657 / 566
X / Y Axis Rapid Speed : 30 m/min

TC series



TC-20α
TC-20α
TC-20α
510 x 400 x 300 mm
Spindle speeds: D.D.S. 12,000 rpm

SHB series



SHM-II020RF/SHB-II025RS
SHB-II030RS/SHB-II040RS
SHB-II030RM/SHB-II040RM
SHB-I3025RS/SHB-I3030RS
SHB-I3040RS/SHB-I3030RM
SHB-I3040RM/SHB-I3030RL
SHB-I3040RL
SHB-II025RS
FBM-11020RF : 2,000 x 1,600 x 1,200(1,400) mm
FBM-11025R : 2,500 x 1,800~2,500 x 1,500(1,700) mm
FBM-11030R : 3,000 x 1,800~2,500 x 1,500(1,700) mm
FBM-11040R : 4,200 x 1,800~2,500 x 1,500(1,700) mm

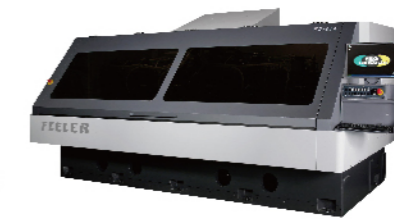
FG-S series



Surface Grinder
FG-S6120 / 6150 / 8150
FG-S8200 / 8300
FG-S6150
Max. grinding width : 610 mm
Max. travel hydraulic : 1,600 mm
Auto. Constant feeding speed :
25~280 mm / min
Max. auto. Transverse travel : 650 mm
Automatic infeed : 0.001~0.009 mm

Drilling Machine

FD series



FD-157 / 257 / 654
X / Y Axis Rapid Speed : 50 / 40 / 50 m/min
Z Axis Rapid Speed : 30 / 30 / 30 m/min
Spindle No. : 1 / 2 / 6

Double Column Machining Center

SVW



SVW-2217/SVW-2817
SVW-2822/SVW-3217
SVW-3222/SVW-3223
SVW-4217/SVW-4222
SVW-4223
SVW-2217
X-axis travel: 2,200 ~ 4,200 mm
Y-axis travel: 1,600 ~ 2,100 mm

CNC Bed Type Universal Milling Machine

SBM series



SBM-2000H/2500H/3000H/3500H
SBM-2000V/2500V/3000V/3500V
SBM-2500V
SBM-2000H: 2,000 x 1,200 x 1,000 mm
SBM-2500H: 2,500 x 1,200 x 1,000 mm
SBM-3000H: 3,000 x 1,200 x 1,000 mm
SBM-3500H: 3,500 x 1,200 x 1,000 mm
SBM-2000V: 2,000 x 1,000 x 1,200 mm
SBM-2500V: 2,500 x 1,000 x 1,200 mm
SBM-3000V: 3,000 x 1,000 x 1,200 mm
SBM-3500V: 3,500 x 1,000 x 1,200 mm

Moving Table Bridge Type Milling Machine

MG series RAMBAUDI



MG220 / 260 / 330
MG220 : 3,000~4,000 x 2,200 x 1,250 mm
MG260 : 4,000~6,000 x 2,600 x 1,250 mm
MG330 : 4,000~10,000 x 3,300 x 1,250 mm

Laser Drilling Machine

AL-272IT/CO₂ series



X / Y Axis Speed : 50 m/min
Z Axis Stroke : 50 mm

SDM/SDL series



SDM-4220



SDL-4228

SDM-2216/SDM-2220/SDM-3216
SDM-3220/SDM-3225/SDM-3225B
SDM-3228/SDM-4216/SDM-4220
SDM-4225/SDM-4225B/SDM-4228
SDM-4232/SDM-5220/SDM-5225
SDM-5225B/SDM-5228/SDM-5232
SDM-5235/SDM-6232/SDM-6235
SDM-7232/SDM-7235
X-axis travel: 2,200 ~ 7,200 mm
Y-axis travel: 1,400 ~ 4,000 mm

5-Axis High Speed Machining Center

RCBOX / RZBOX series RAMBAUDI



RZBOX PLUS
RCBOX / RCBOX PLUS :
4,500~8,000 x 2,700 (3,000) x 1,500 mm
RZBOX / RZBOX PLUS :
6,000~10,000 x 3,500 (4,000) x 1,500 (2,000) mm

Parallel Kinematics Machining Center

X-700R series



Axis 1,2,3 travel : 700 mm
Spindle speed : 18,000 mm
Spindle motor : 32.5 kw
Max. speed (X / Y / Z) :
125 / 125 / 45 m/min
Max. acceleration (X / Y / Z) :
3 / 3 / 1 G